

*Silhouette*<sup>®</sup>

AUTHENTIC EYEWEAR. SINCE 1964.

**AJUSTAR HASTES**

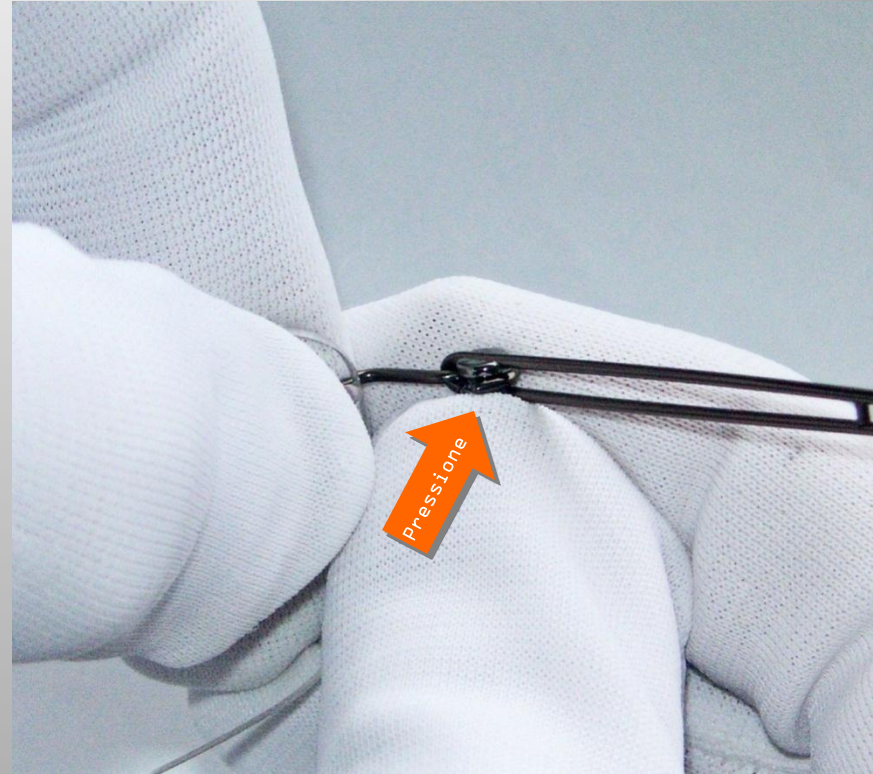
**5227**

# Abertura da haste

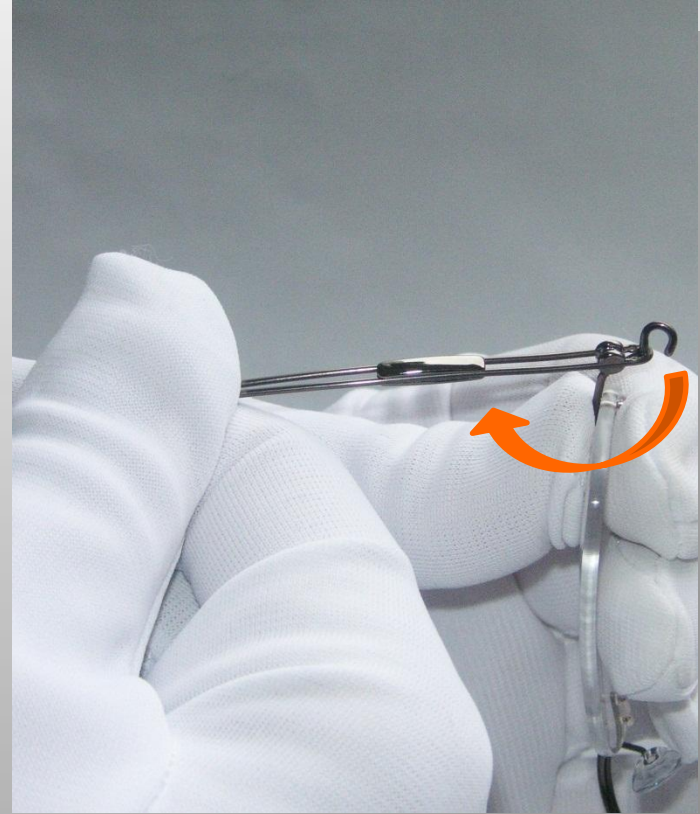
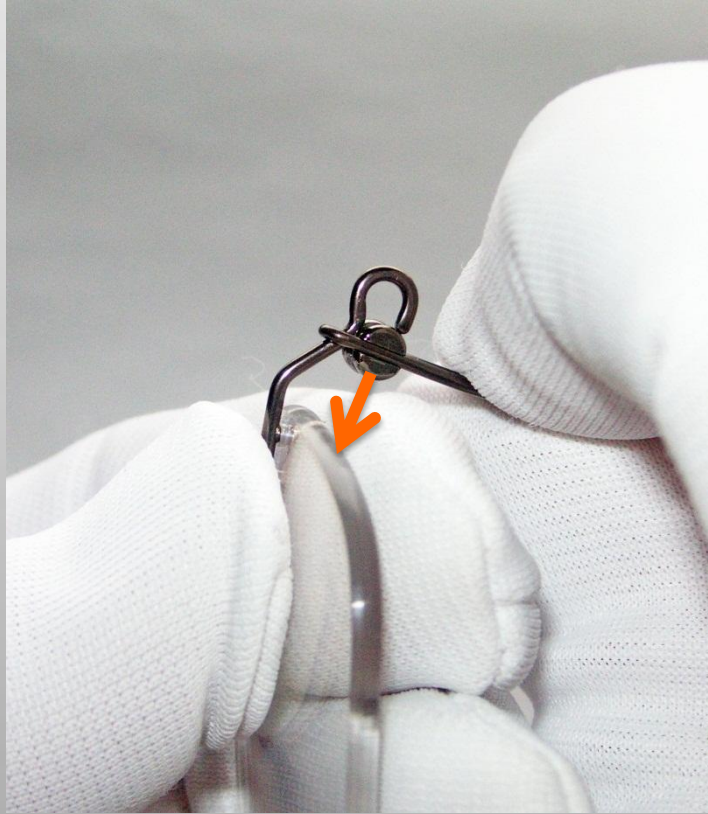
REDUZIR



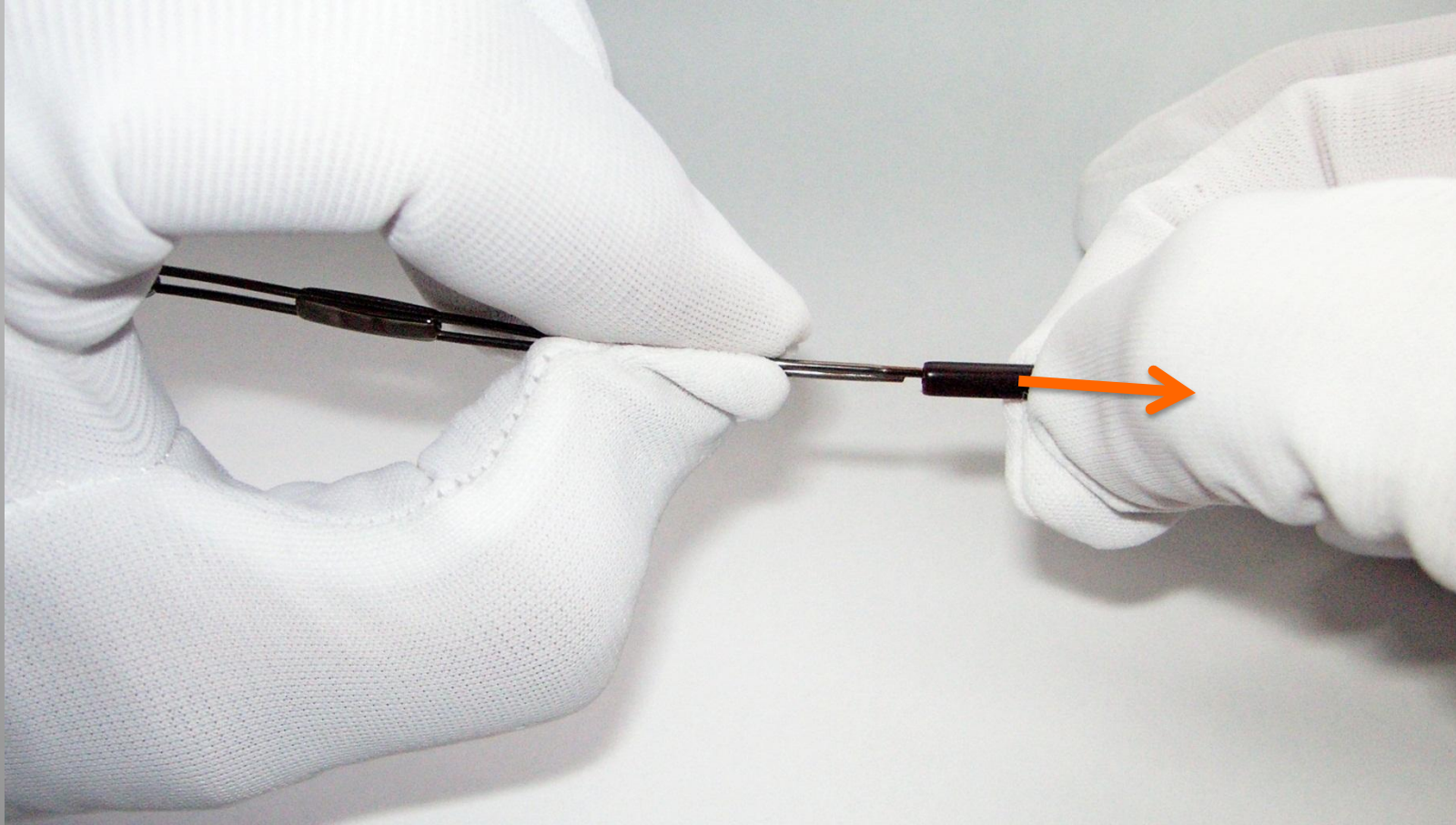
AUMENTAR



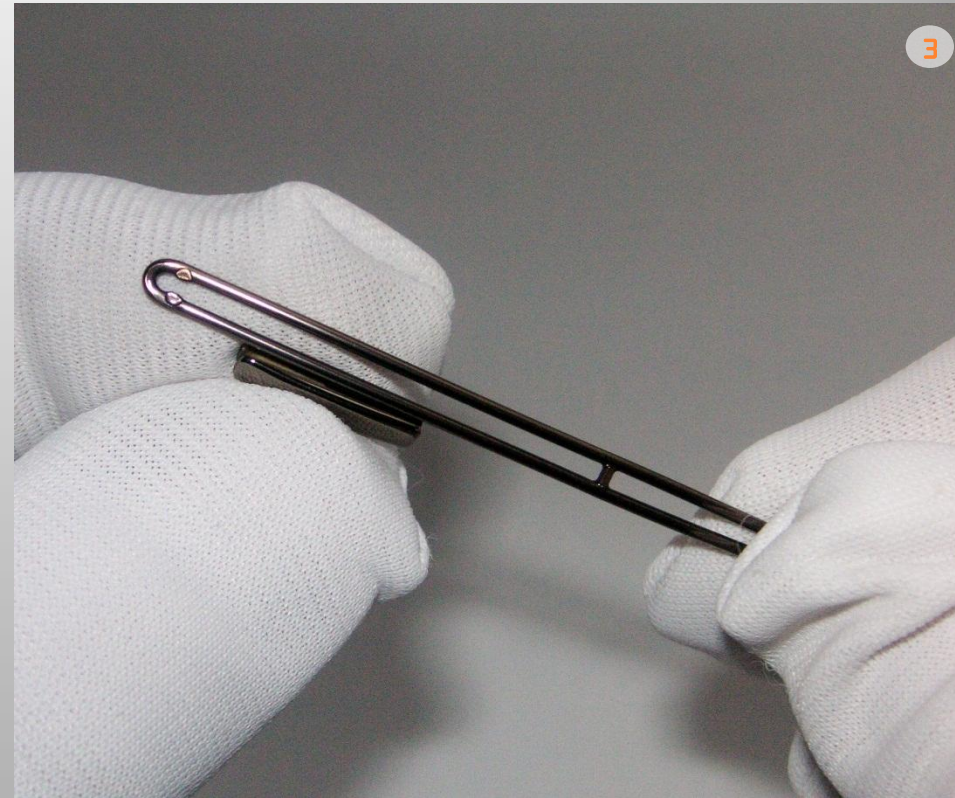
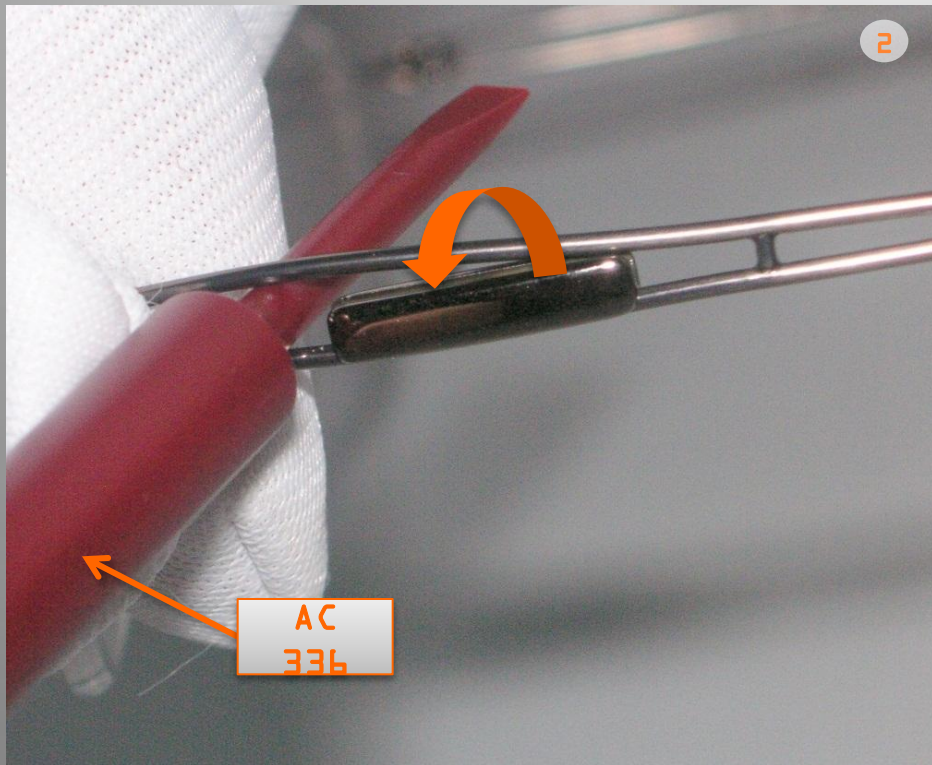
# Desmontagem da haste



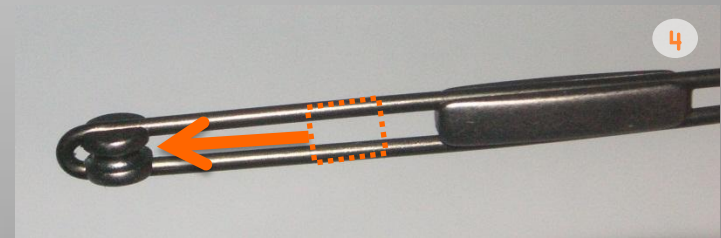
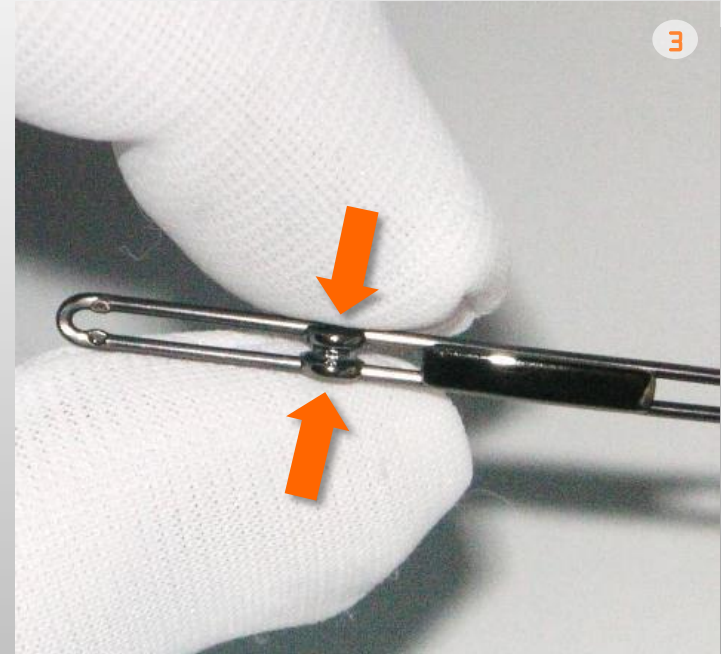
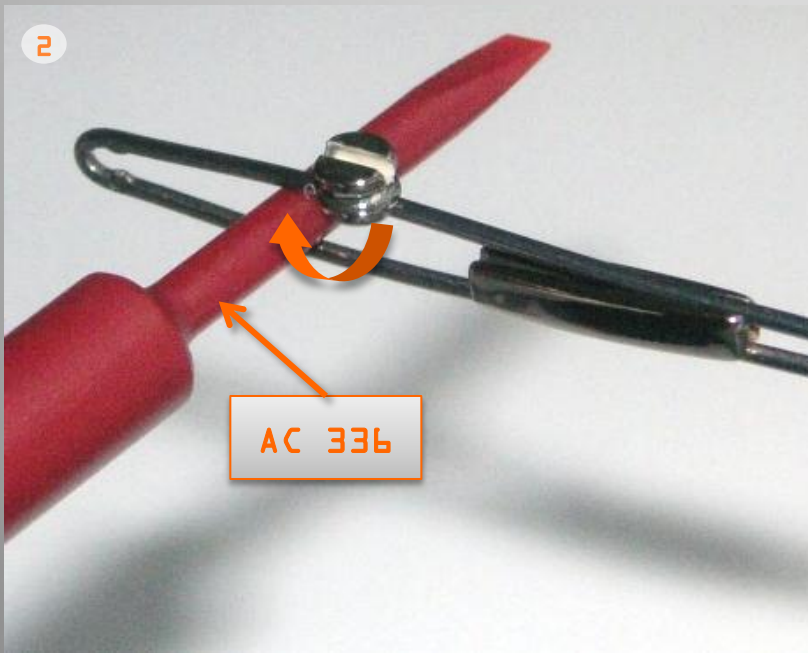
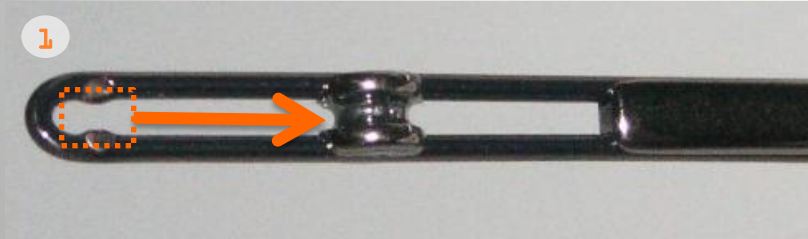
Simple desmontagem de terminais: só puxar



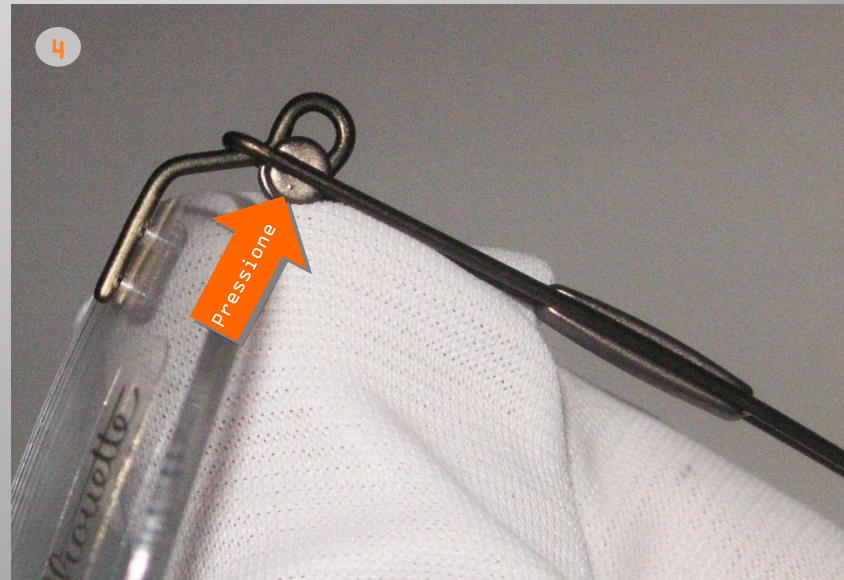
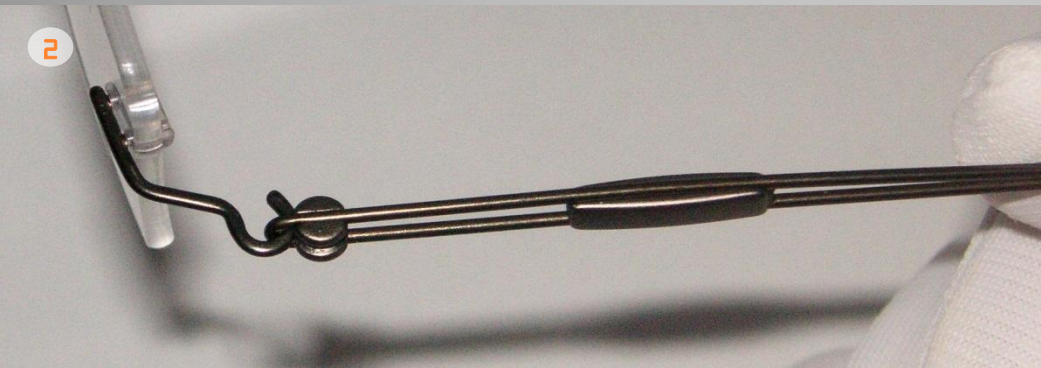
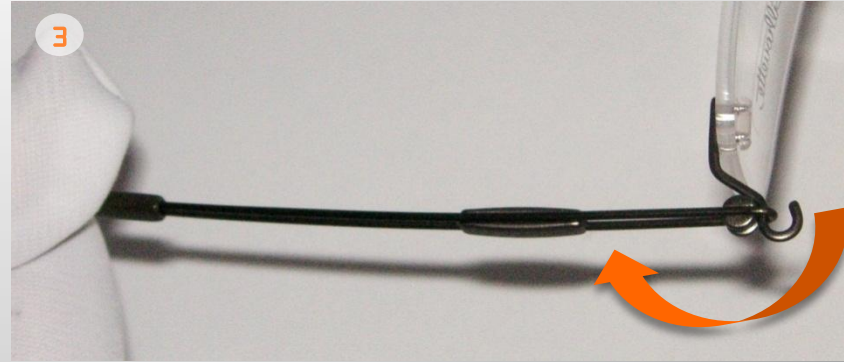
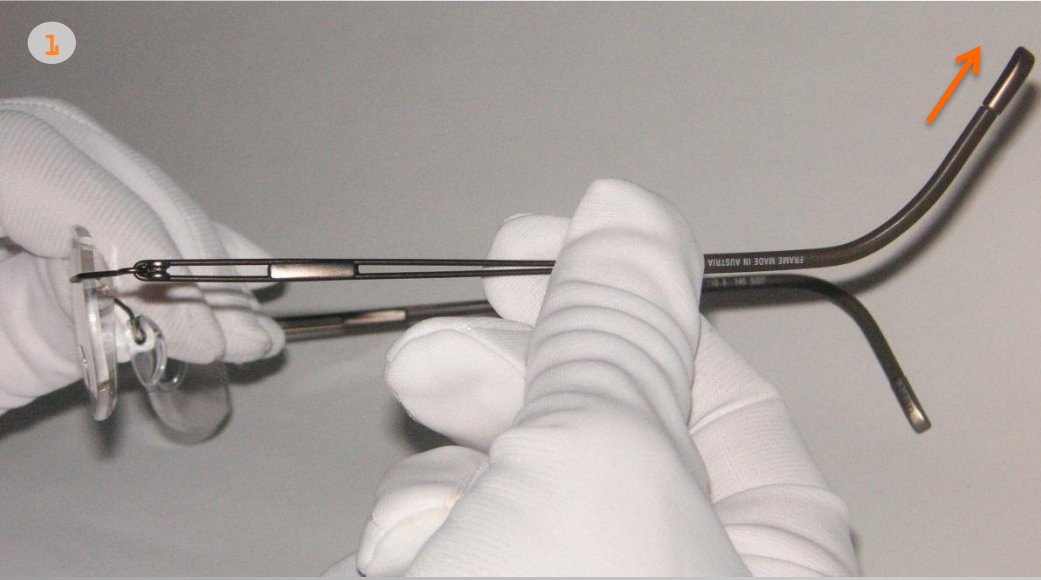
# Trocar embelezador da haste



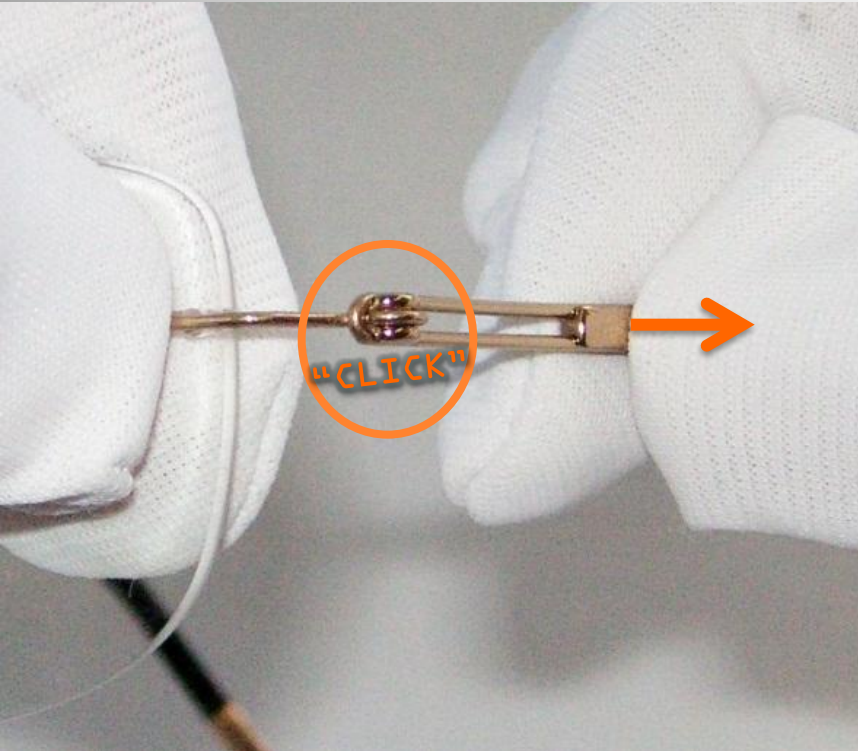
# Trocar Cilindros



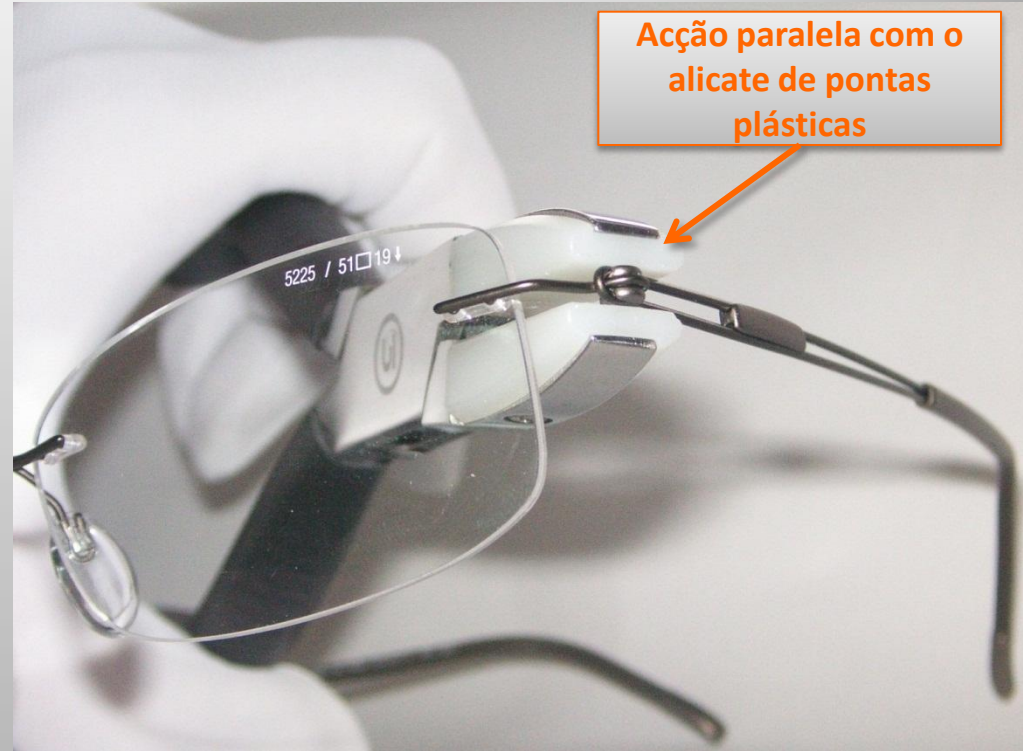
# Montagem das hastes



## Fixação das hastes



1. Puxe a haste para trás até parar e ouvir (“click”) e fixa.



2. Pressione a haste contra os cilindros.