



Collection Guide

Mod.: 8192, 8741, 8743, 8744, 8745

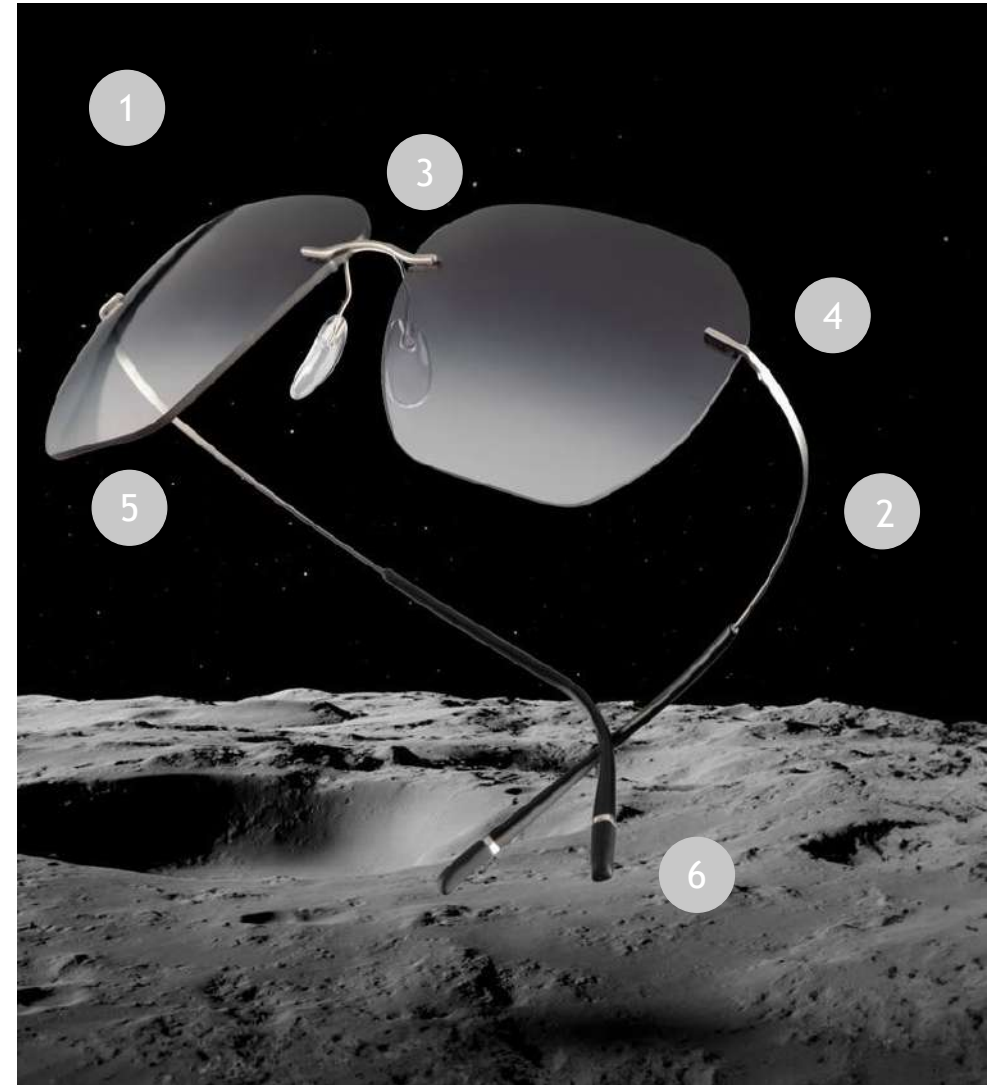
Titan Minimal Art Sunglasses

Content

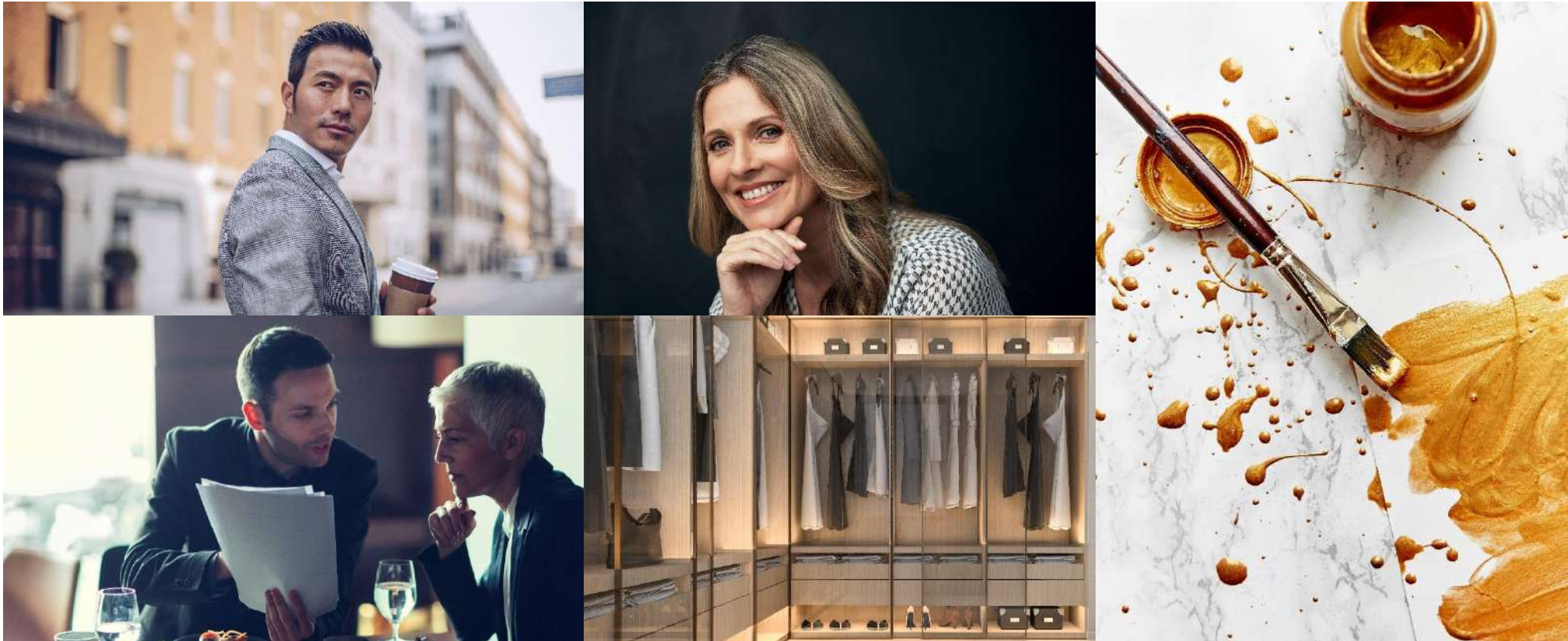
| CHAPTER | CONTENT | PAGES | STORYLINE |
|---------|-----------------------|-------|---|
| 01 | Strategic Approach | 3-4 | <i>USPs, Consumer Group</i> |
| 02 | Design | 5-19 | <i>Design Inspirations, Product Romancing & Special features for Storytelling</i> |
| 03 | Product | 20-26 | <i>Model Sizes, Shapes & Colors, Collection SUN24 Overview</i> |
| 04 | Marketing | | |
| 05 | Equipment | | |
| 06 | Spare Parts | | |
| 07 | Technical Information | | |

USPs

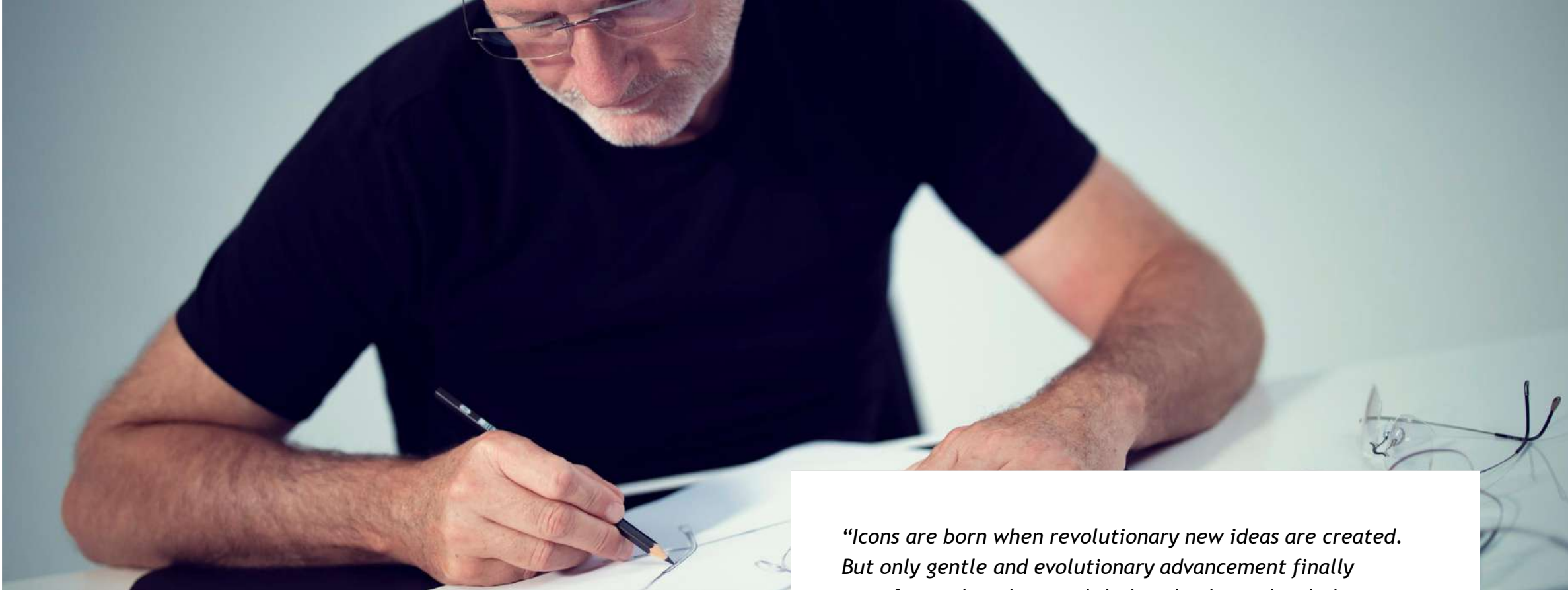
1. The best of 25 years of experience - Update on iconic, award-winning masterpiece of minimalistic art of design
2. Modern, dynamic temple design made of high-tech titanium with an improved flex & adaptability
3. New nosebridge with a contemporary aesthetic appeal
4. Characteristic hingeless technology, guarantees perfect fit & highest wearing comfort 24/7
5. Shape and color update: Balanced assortment of modern and classic shapes and colors
6. Signature temple end, adjustable and shortable



Consumer group Titan Minimal Art



Professional. Wears TMA 24/7, rimless fan, loves customization and timeless signature products with style evolutions over the years.



Titan Minimal Art

"Icons are born when revolutionary new ideas are created. But only gentle and evolutionary advancement finally transforms them into real design classics and style icons."

Celerating 25 years, every element of the TMA collection has been finetuned to make something good even better.

The sun collection offers a mix of timeless evergreens and modern interpretations for a perfectly balanced offer talking a wide range of customers."

Gerhard Fuchs, Designer

Silhouette
ICONIC EYEWEAR MADE IN AUSTRIA. SINCE 1964.

New nosebridge with a contemporary aesthetic matching the new hinge design



Modern, dynamic temple design with an improved flexzone and adaptability

New temple end featuring Silhouette's new signature ring.



NASH





Avior







ADARA





CALEUM





Felis







How can we make the new TMA SUN launch most successful?

Highlight the new
product design
features

Promote Vision
Sensation & SLM
as USP

Capitalize on
strong storytelling
behind 25y TMA

Titan Minimal Art SUN

Mod. 8192 ADARA



Size:
61/17
140 mm

Color Code:

Lens Color Name:

Frame Parts Name:



3530

Glossy Caramel Mirror

Rosegold / Dark Brown



7000

SLM Purple

Rhodium / Dark Red



7110

Classic Grey Gradient

Titanium / Black



7530

SLM Red Brown Gradient

Gold / Dark Brown

Titan Minimal Art SUN

Mod. 8741 NEIL



Size:
60/19
145 mm

Color Code:



6040



7210



7630



9040

Lens Color Name:

Classic Brown Gradient

Classic Grey Gradient

Classic Green Gradient

SLM POL Grey

Frame Parts Name:

Brown / Black

Titanium / Black

Gold / Black

Pure Black

Titan Minimal Art SUN

Mod. 8743 GLENN



Size:
60/15
145 mm

Color Code:

Lens Color Name:

Frame Parts Name:



6040

Classic Brown Gradient

Brown / Black



7210

Classic Grey Gradient

Titanium / Black



9040

SLM POL Grey

Pure Black



9140

SLM Silver Mirror Gradient

Pure Black

Titan Minimal Art SUN

Mod. 8744 NASH



Sizes:

| | |
|--------|--------|
| 59/15 | 61/15 |
| 145 mm | 145 mm |

Color Code:



7210

Lens Color Name:

Classic Grey Gradient

Frame Parts Name:

Titanium / Black



7310

SLM POL Grey

Titanium / Black



7730

SLM Red Brown Gradient

Gold / Dark Brown



7830

Classic Green Gradient


Gold / Black

Titan Minimal Art SUN

Mod. 8745 CALEUM



Size:
59/17
140 mm

| <u>Color Code:</u> | <u>Lens Color Name:</u> | <u>Frame Parts Name:</u> |
|--|----------------------------|--------------------------|
|  7000 | SLM Purple | Rhodium / Dark Red |
|  7210 | Classic Grey Gradient | Titanium / Black |
|  7930 | SLM Red Brown Gradient | Gold / Dark Brown |
|  9140 | SLM Silver Mirror Gradient | Pure Black |

LENS ASSORTMENT

FULL COLLECTION 1:1 Rx-able with SVS

Uni POL



SLM POL Grey



SLM POL Brown



SLM POL Green

Uni



SLM Grey



SLM Brown



SLM Green



SLM Purple

Classic Gradient



Classic Grey Gradient



Classic Brown Gradient



Classic Green Gradient



SLM Red Brown Gradient

Photo-chromic



LightQ Grey

Mirror Gradient



SLM Blue Mirror Grad.



SLM Silver Mirror Grad.

Glossy Mirror



Glossy Caramel Mirror



SLM Glossy Rose Mirror

Collection SUN24

STREAMLINE COLLECTION



CARBON T1 COLLECTION



ADVENTURER COLLECTION



ACTIVE

SUN LITE COLLECTION



Titan Minimal Art Collection



NEW

CLASSIC

ACCENT SHADES



TITAN BREEZE COLLECTION



RIMLESS SHADES



EOS COLLECTION



INFINITY COLLECTION



CONTEMPORARY

Equipment | Mod. 8192, 8741, 8743, 8744, 8745

SHE 257 (case)



FK 118-3 (cardboard box)



PL 44 (cleaning cloth)



PZE 7 (leaflet)



ZE 344-1 (sunglasses certificate)



Spare Parts | Mod. 8192, 8741, 8743, 8744, 8745

MST 975-1 (bridge) incl. SP 96, BLS 48 + BLS 85 (SP 107 for mod. 8743+8744),

MST 970-1 (upper bridge) for mod. 8742+8744 incl. BLS 55,

Temples (BM 656-2) incl. GK 297 and BLS 56,

SOG 132, 133 and 188 (sun protection lenses) incl. BLS 48 + BLS 56,

GK 297 (temple ends),

SP 96 resp. SP 107 (nose pads) ,

BLS 48 resp. BLS 55 (glazing sleeves - bridge),

BLS 56 (glazing sleeves - side parts),

BLS 85 (nose pad damping),

Optical Glazing: BLS 58 resp. BLS 44(glazing sleeves - bridge and side parts)

Clear lenses 6 base = SOG 188/541



Technical Information Titan Minimal Art SUN

Mod. 8192, 8741, 8743, 8744, 8745

Lens Competence Center

Glazing | Titan Minimal Art SUN

Use the glazing aids from Silhouette - Technician Box P 0041

| STANDARD BLS 58 | BLS 96 „large“ | BLS 97 „short“ | BLS 98 „long“ | BLS 44 „single“ |
|---|---|--|---|---|
| Standard Glazing | for too big drills | for too thin lenses | for very thick lenses | for single drill holes |
|  |  |  |  |  |
| Lens size: 1,6 – 6,5 mm | Lens size: 2,0 – 6,5 mm | Lens size: 1,3 – 3 mm | Lens size: 6 – 9,5 mm | Lens size: 2 – 6,5 mm |
|  |  |  |  |  |
| Ø 1,4 mm | Ø 1,6 mm | Ø 1,4 mm | Ø 1,4 mm | Ø 1,4 mm |




- Silhouette mounting plier pink (AC 623 or AC 624 crossed),
- Green plastic tip AC 266, AC 267 for the single drill hole of the models 8742, 8744
- BLS 58, BLS 97, BLS 98, BLS 44

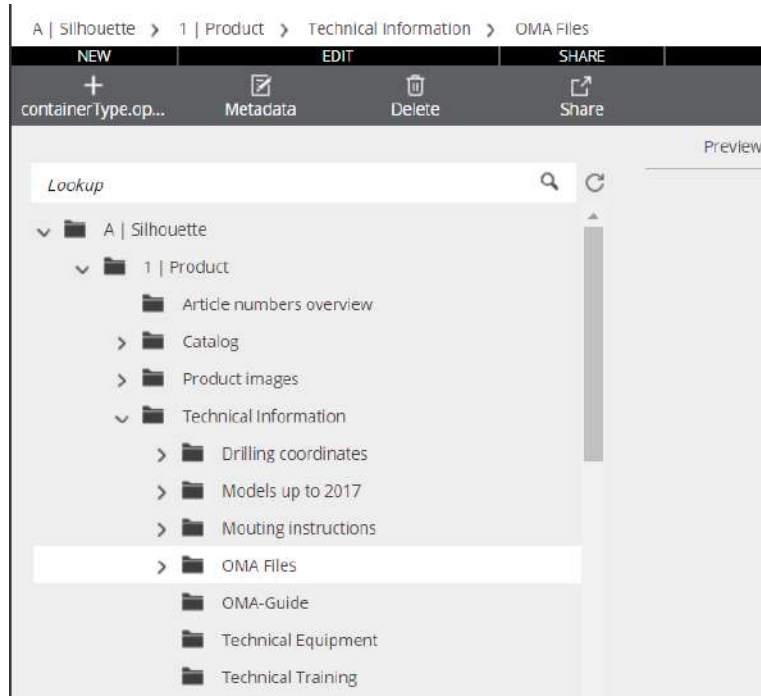
Verglasung | Titan Minimal Art

Use the glazing aids from Silhouette - Technician Box P 0041

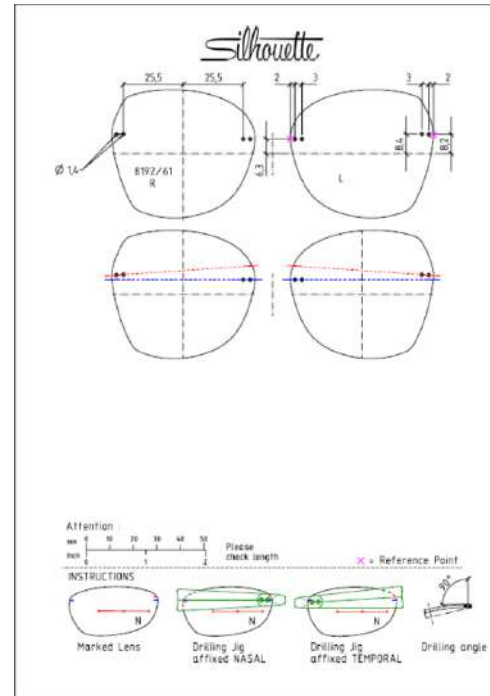


- Blue-Multi-Tool

Glazing | Titan Minimal Art SUN



Mediahub



Bohrkoordinaten

Optical high index lenses 1,6 in base curve 6 are recommended. The OMA files and the drilling coordinates can be downloaded from the Mediahub.

Glazing Base curve < 6.0 | Titan Minimal Art SUN



Base curves < 6.0 are possible
Mod. 8192, 8741, 8743, 8745



Except Mod. 8742 und 8744, because of
the drill holes of the top bar, base curve
6.0 is recommended

Mounting Top bar| Titan Minimal Art SUN



To assemble the top bar insert the BLS 44 as usual in the single drill hole and shorten it to the desired length with the BLS Cutter AC 392.

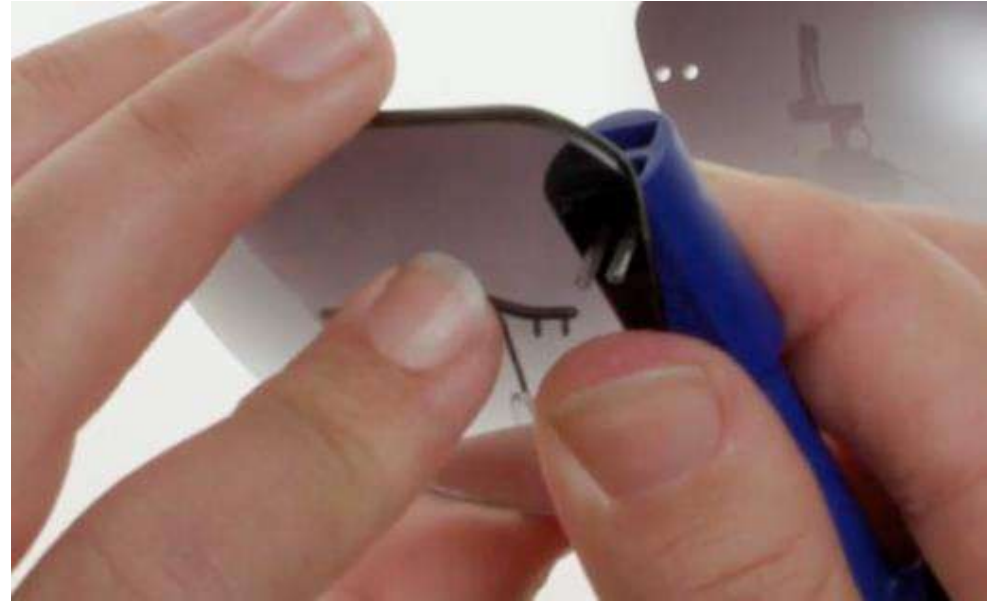


Mount the top bar with the green plastic tips AC 266 and AC 267.

Lens assembling - BLS cutting| Titan Minimal Art SUN



Insert the appropriate BLS from the back of the lens into the drill holes. Make sure that the BLS head rests against the back surface of the lens.



With the notch of the Blue-Multi-Tool press the head of the BLS against the lens from behind.

Lens assembling - BLS cutting | Titan Minimal Art SUN



Additional tape to protect against scratches is not required when using the BLS Cutter AC 392. The BLS Cutter cuts the BLS to length without deforming the BLS sleeves.



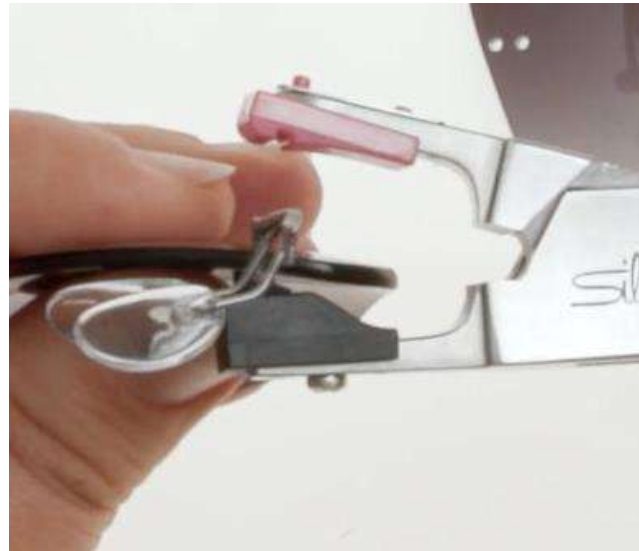
Widen BLS holes with the pointed end of the Blue-Multi-Tool, always fixing the BLS with your thumb.

Lens assembling | Titan Minimal Art SUN

Start the assembly with the bridge.



Insert the titanium pins of the bridge into the holes of the BLS and press them in slightly. Use the Blue-Multi-Tool to fix the BLS.

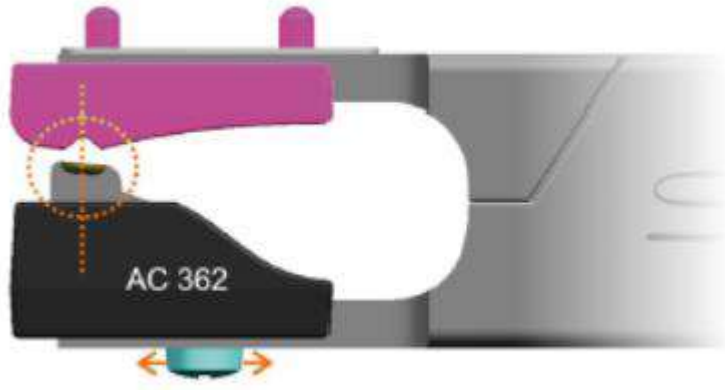


Position the black seesaw of the mounting plier on the BLS head. Position the colored plastic part of the mounting plier on the bridge.



Position the colored plastic tip of the mounting plier on the bridge.

Mounting lens | Titan Minimal Art SUN



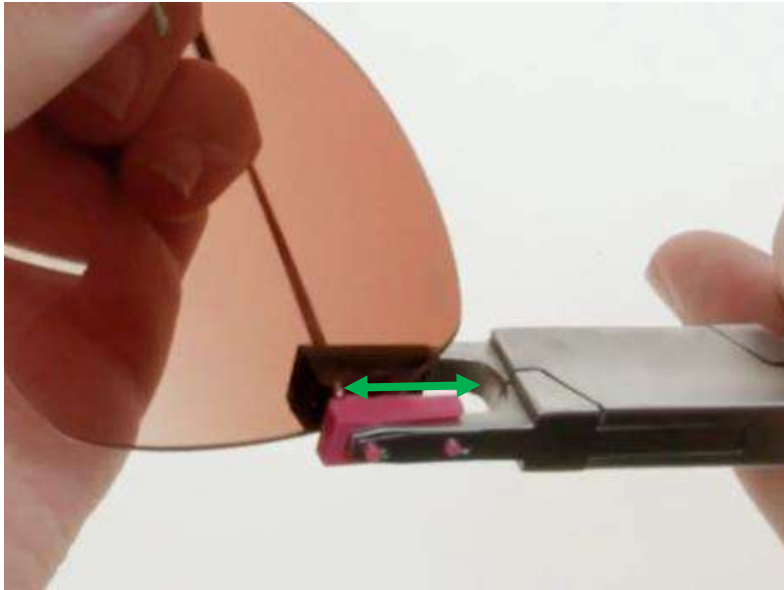
Check if the BLS head is still in contact with the back surface of the lens. If this is not the case, the BLS must be replaced, and the process repeated.

Do the same with the other side of the bridge and temples.

The jaws of the pliers should be 90° to each other. Open the screw to adjust the jaws.

Mounting lens| Titan Minimal Art SUN

Big lens shapes and centered drillholes



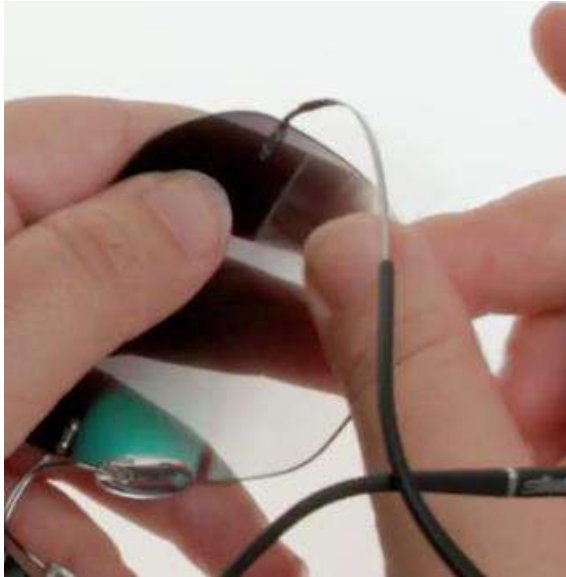
AC 264



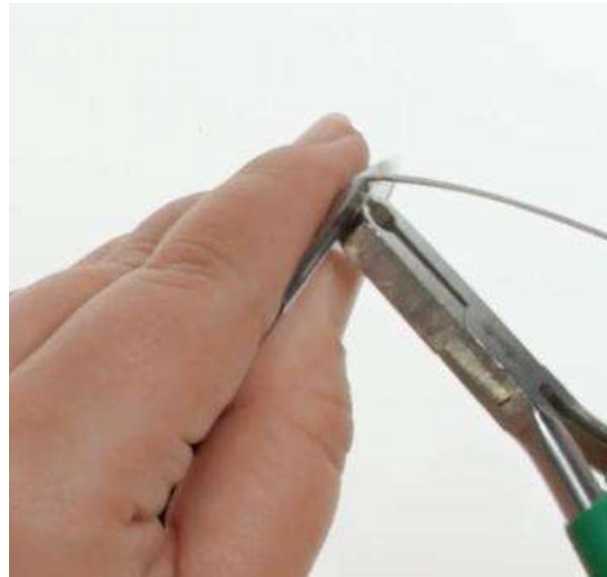
AC 506

If the drill holes are positioned so deep in the lens, that the opening of the mounting pliers is not big enough, use the crossed AC parts.

Lens disassembling | Titan Minimal Art SUN



Use the tape on the back surface of the lens around the BLS head to protect the lens surface from scratches.

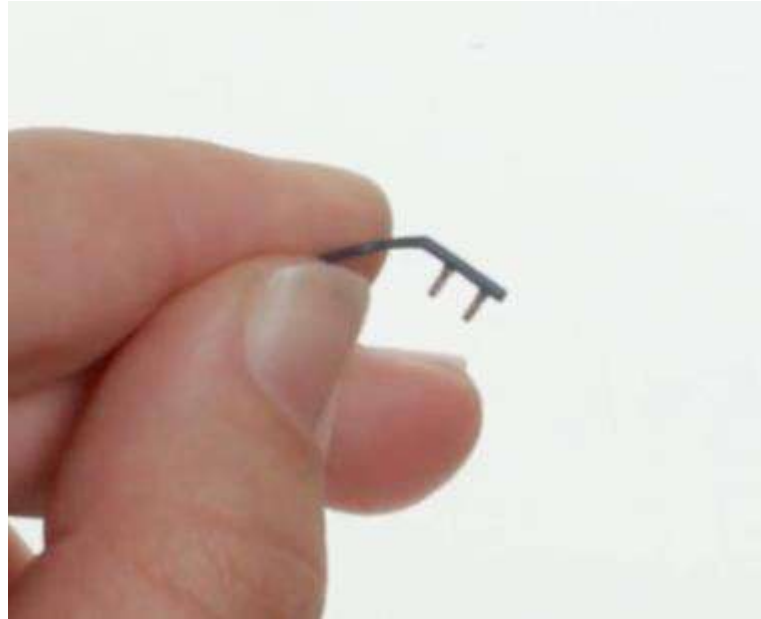
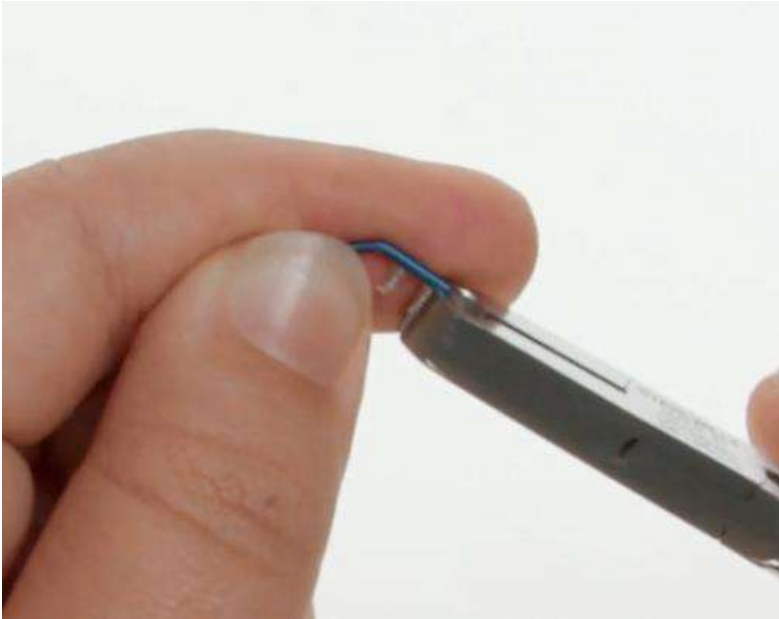


Pinch off carefully the remaining BLS residue from the titanium pins with the BLS cutter (green handled plier), do not turn the pliers



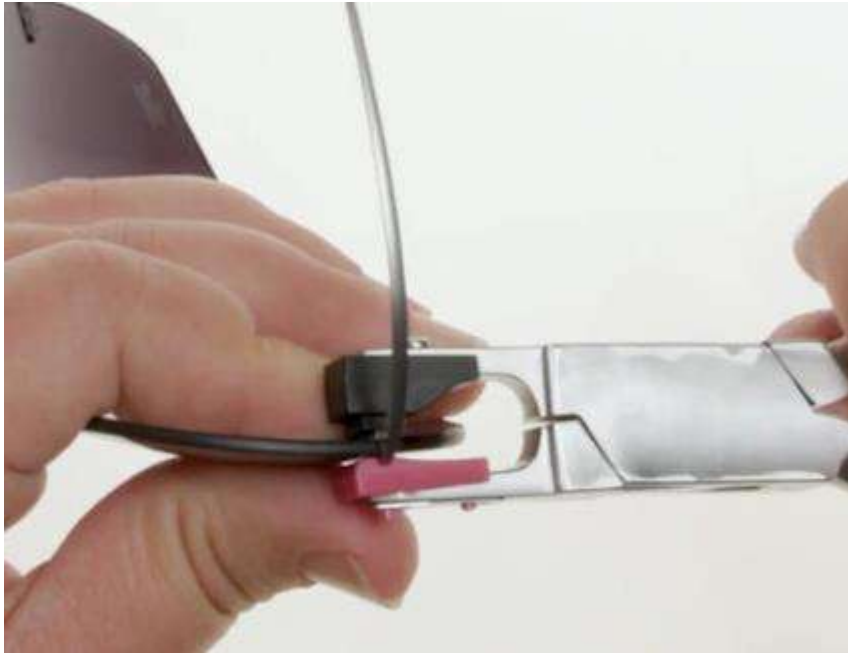
Carefully pull the frame pins out of the lens. For thicker lenses, the AC 212-5 disassembly tool can be used to push the titanium pins out of the lens.

Lens disassembling | Titan Minimal Art SUN

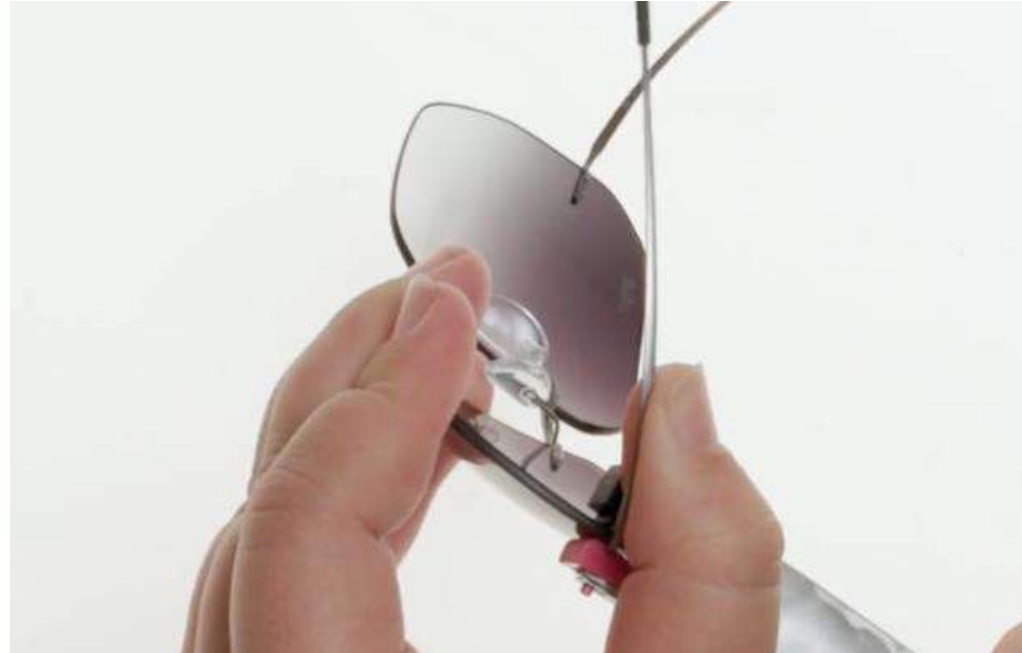


Remove the rests of the BLS from the pins. The titanium pins must not be damaged. For demo frames carefully cut off the BLS head, as the titanium pin length is slightly longer than the thickness of the demo lenses.

Inclination | Titan Minimal Art SUN



Hold lens fixation firmly with the mounting pliers.



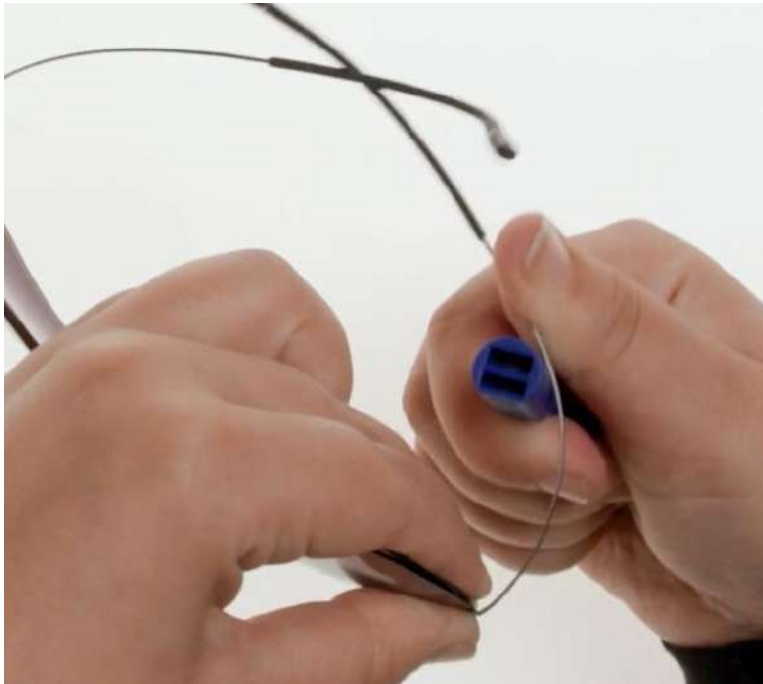
Bend the temple in the required direction

Temple opening - enlarge | Titan Minimal Art SUN



Use the Blue-Multi-Tool with the rounded part to enlarge the temple opening

Temple opening - reducing | Titan Minimal Art SUN



Use the Blue-Multi-Tool to reduce the temple opening

Nosepads adjustment | Titan Minimal Art SUN



Adjust the nosepads with the small opening of the Blue-Multi-Tool in the desired position

Temple shortening - not glued | Titan Minimal Art SUN



Straighten temple and pull off temple cover with small rotation moves

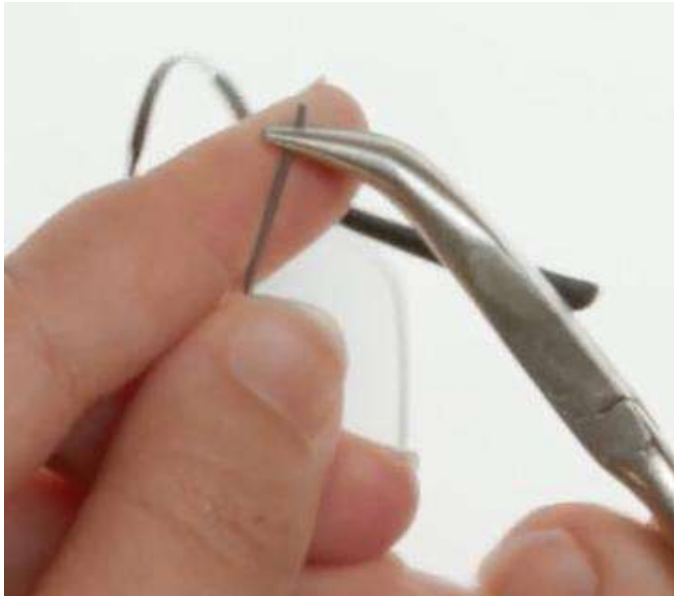


Shorten titanium wire with metal-diagonal cutter



Shape sharp edges round with a file

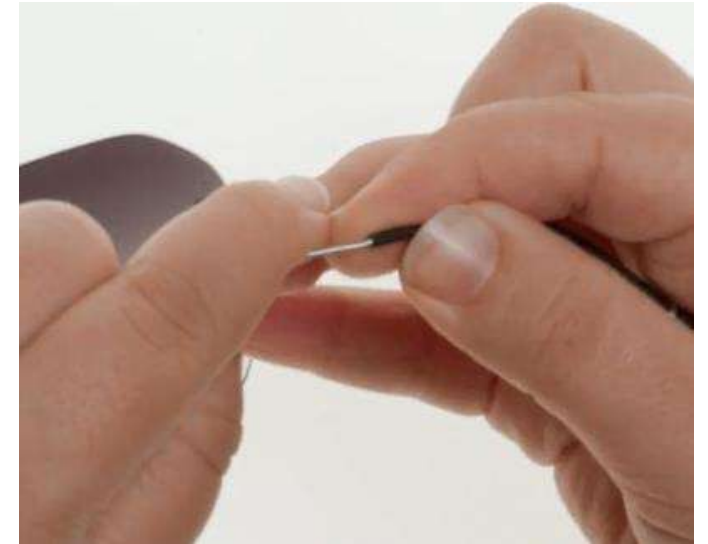
Temple shortening | Titan Minimal Art SUN



Squeeze titanium wire with round pliers at the very end to avoid sliding of the temple end

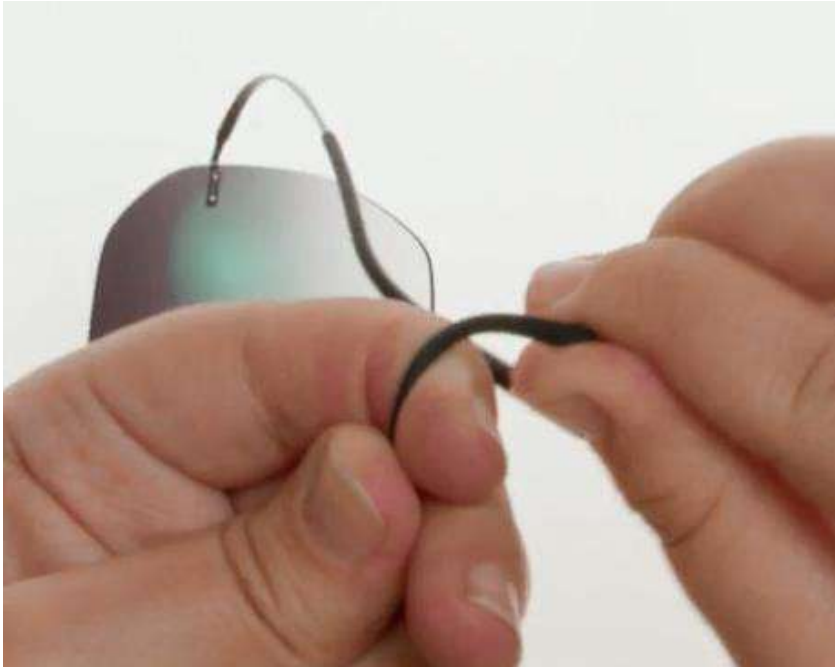


Shorten the temple end with a scalpell



Slide it over the metal inlay.

Temple-end adjustment | Titan Minimal Art SUN



Adjust the temple-end to the ear and head shape using large curves. Do not put pressure at the temple tip

Additional information | Titan Minimal Art SUN

Cleaning in an ultrasonic bath or with ethanol/ spirit is possible.
Avoid high temperatures such as the dashboard in the car
or the sauna.
Always use the supplied case for storage



Silhouette®

ICONIC EYEWEAR MADE IN AUSTRIA. SINCE 1964.